

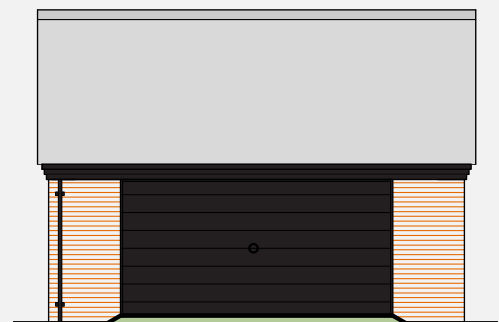
Plot Five

The Meadows



Plot Five Specification

- Bespoke kitchens with Neff appliances
- Quartz worktops
- Choice of ceramic floor & wall tiles
- Villeroy & Boch Sanitaryware
- Oak staircase with carpeted treads & risers
- Oak veneered internal doors with chrome fittings
- Electrically operated garage doors
- Chrome electric switch plates & sockets
- Alarm system
- Mains Gas & Electric
- Installation of BT Fibre
- Carpets included
- Underfloor heating to ground floor
- Painted skirtings & architraves



Halls

Sales: 01691 670 320

Please contact our sales partner Halls for details and pricing.

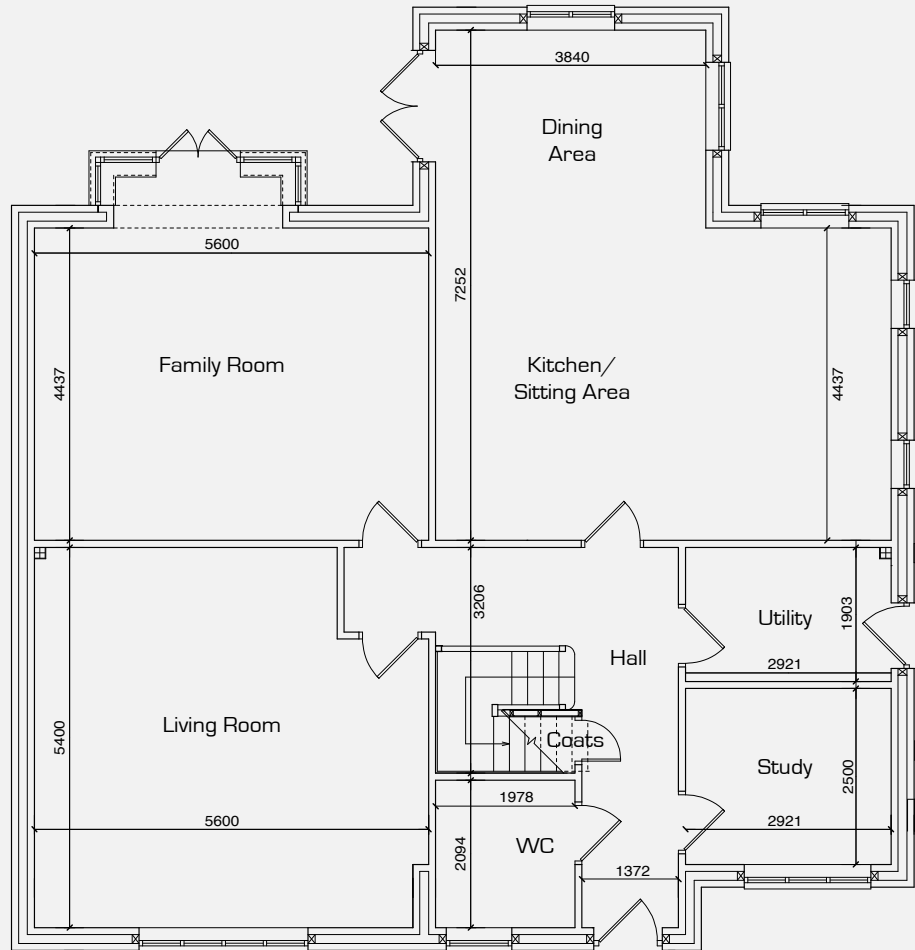
Plot Five

Floor Plans

Ground Floor

Room Dimensions:

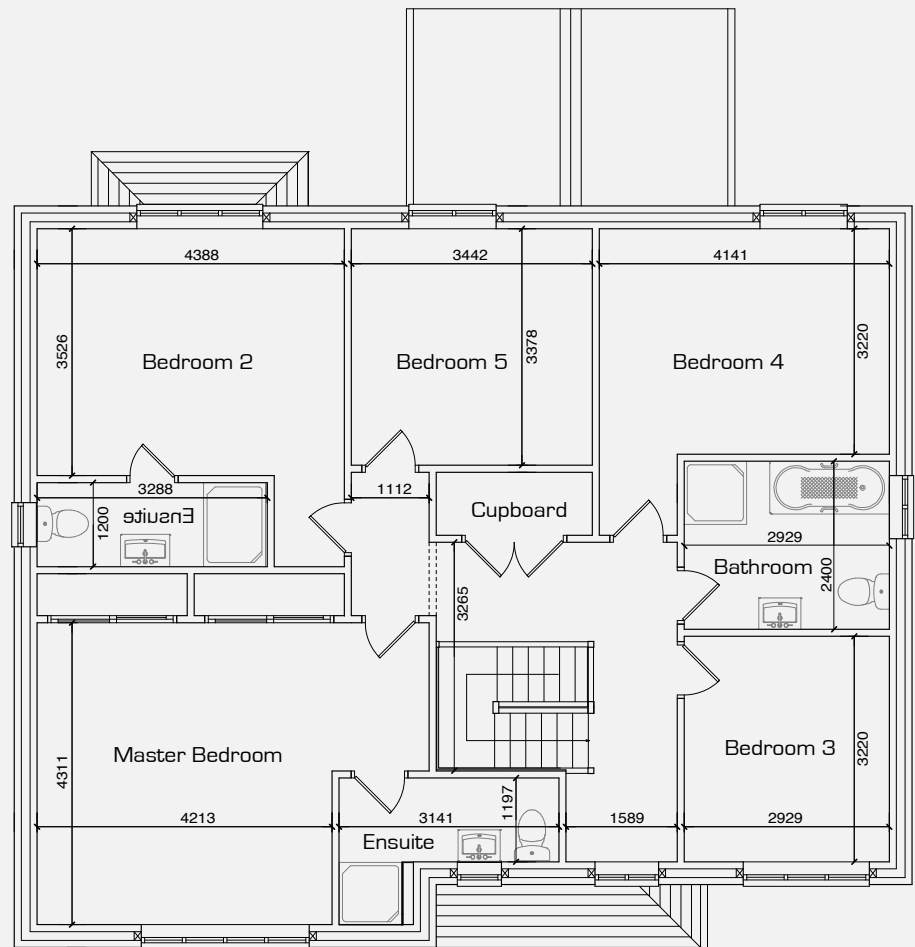
Kitchen	6.4 x 4.4m
Dining	3.8 x 2.8m
Family	5.6 x 4.4m
Living	5.6 x 5.4m
Study	2.9 x 2.5m
Utility	2.9 x 1.9m
WC	2 x 1.9m
Garage	5.4 x 5.4m



First Floor

Room Dimensions:

Master Bed	5.6 x 4.3m
Ensuite	3.1 x 2m
Bedroom 2	4.3 x 3.5m
Ensuite	3.2 x 1.2m
Bedroom 3	3.2 x 2.9m
Bedroom 4	4.1 x 3.2m
Bedroom 5	3.3 x 3.4m
Bathroom	2.9 x 2.4m



All plans and visuals are for illustration only and may change prior to completion. Measurements are approximate and correct at time of printing.