

Plot Four

The Meadows



Plot Four Specification

- Bespoke kitchens with Neff appliances
- Quartz worktops
- Choice of ceramic floor & wall tiles
- Villeroy & Boch Sanitaryware
- Oak staircase with carpeted treads & risers
- Oak veneered internal doors with chrome fittings
- Electrically operated garage doors
- Chrome electric switch plates & sockets
- Alarm system
- Mains Gas & Electric
- Installation of BT Fibre
- Carpets included
- Underfloor heating to ground floor
- Painted skirtings & architraves

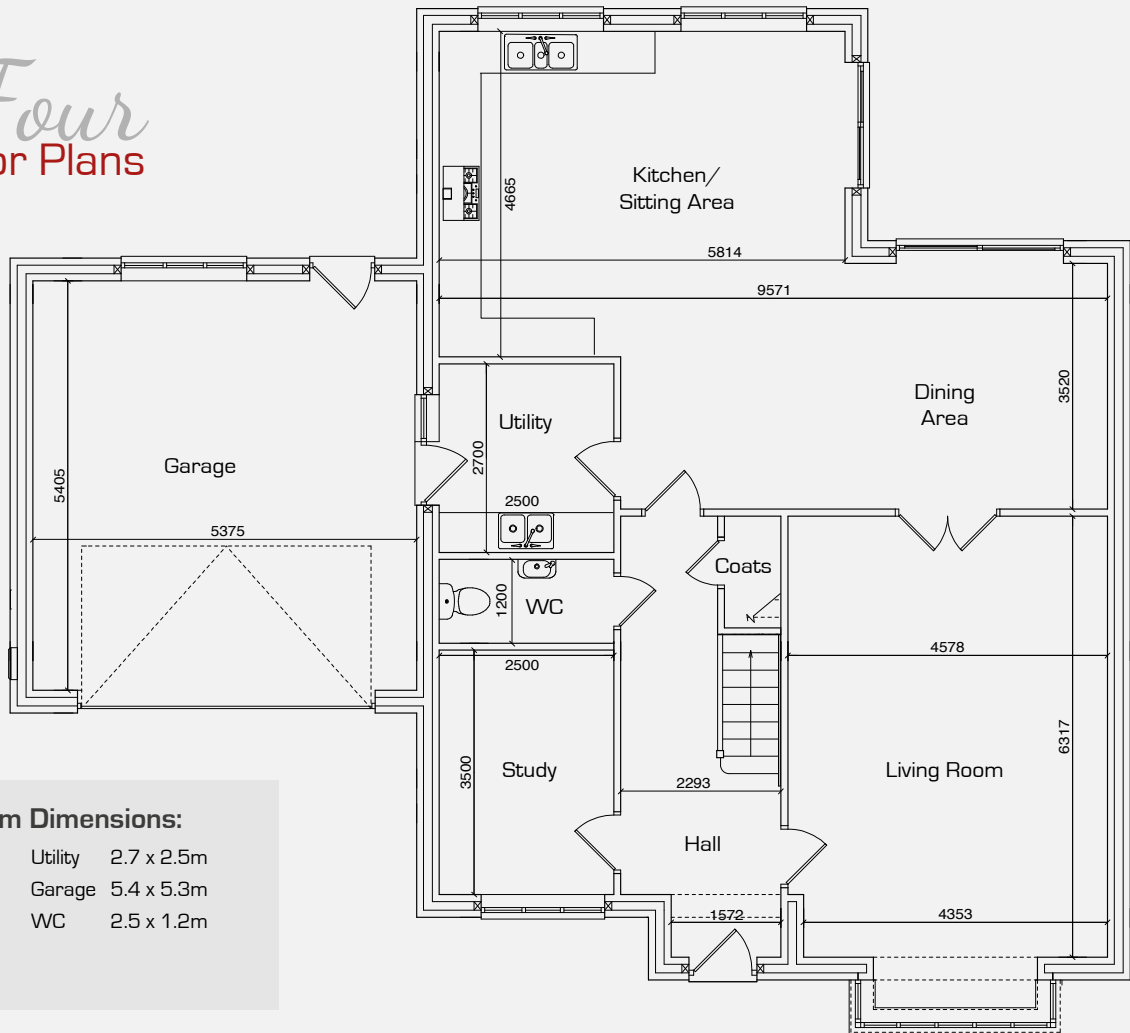


Halls

Sales: 01691 670 320

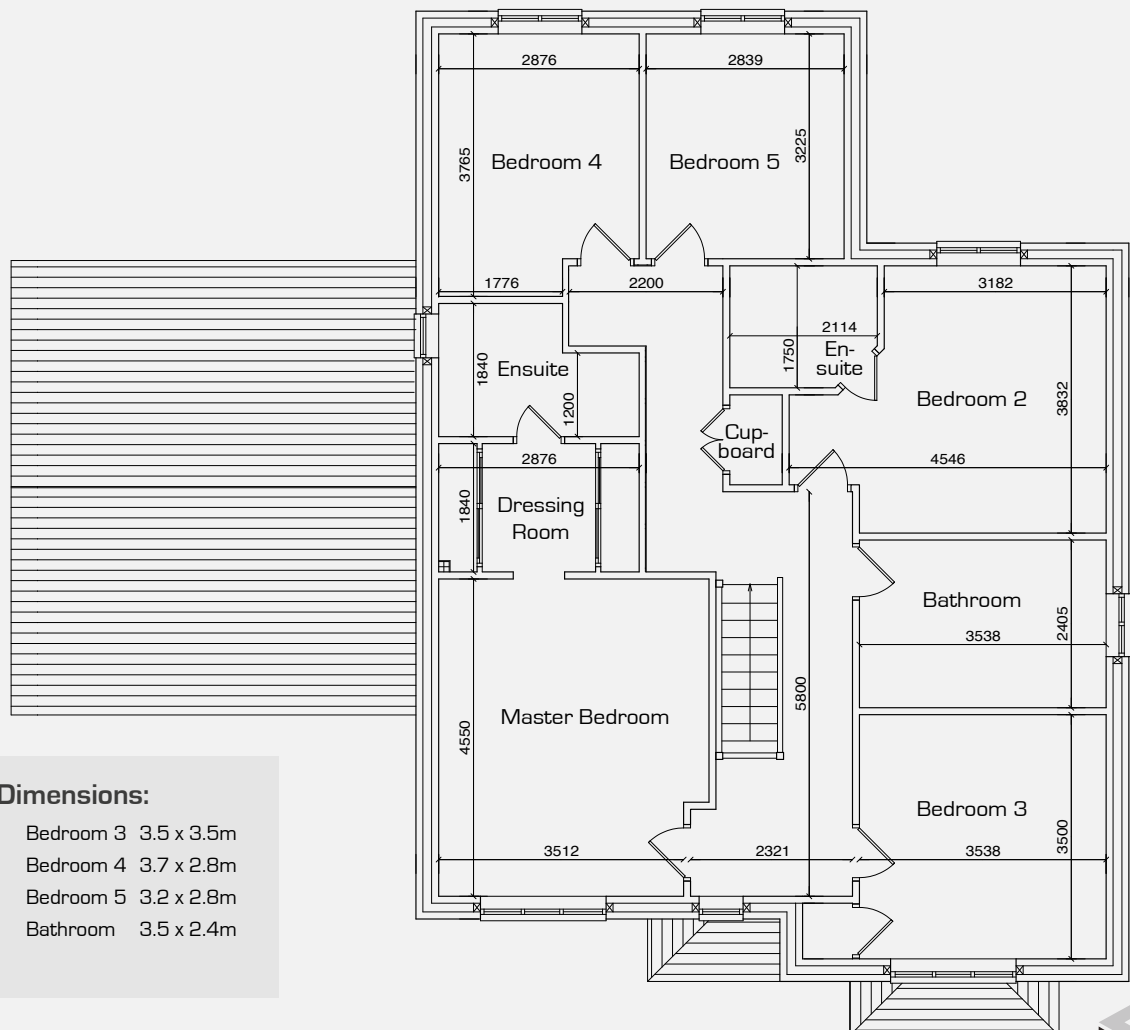
Please contact our sales partner Halls for details and pricing.

Plot Four Floor Plans



Ground Floor Room Dimensions:

Kitchen	5.8 x 4.6m	Utility	2.7 x 2.5m
Dining	6.9 x 3.5m	Garage	5.4 x 5.3m
Living	6.3 x 4.5m	WC	2.5 x 1.2m
Study	3.5 x 2.5m		



First Floor Room Dimensions:

Master Bed	4.5 x 3.5m	Bedroom 3	3.5 x 3.5m
Dressing	2.8 x 1.8m	Bedroom 4	3.7 x 2.8m
Ensuite	2.8 x 1.9m	Bedroom 5	3.2 x 2.8m
Bedroom 2	4.5 x 3.8m	Bathroom	3.5 x 2.4m
Ensuite	2.1 x 1.7m		

All plans and visuals are for illustration only and may change prior to completion. Measurements are approximate and correct at time of printing.