

Plot One

The Meadows



Plot One

Specification
RESERVED

- Bespoke kitchens with Neff appliances
- Quartz worktops
- Choice of ceramic floor & wall tiles
- Villeroy & Boch Sanitaryware
- Oak staircase with carpeted treads & risers
- Oak veneered internal doors with chrome fittings
- Electrically operated garage doors
- Chrome electric switch plates & sockets
- Alarm system
- Mains Gas & Electric
- Installation of BT Fibre
- Carpets included
- Underfloor heating to ground floor
- Painted skirtings & architraves



Halls

Sales: 01691 670 320

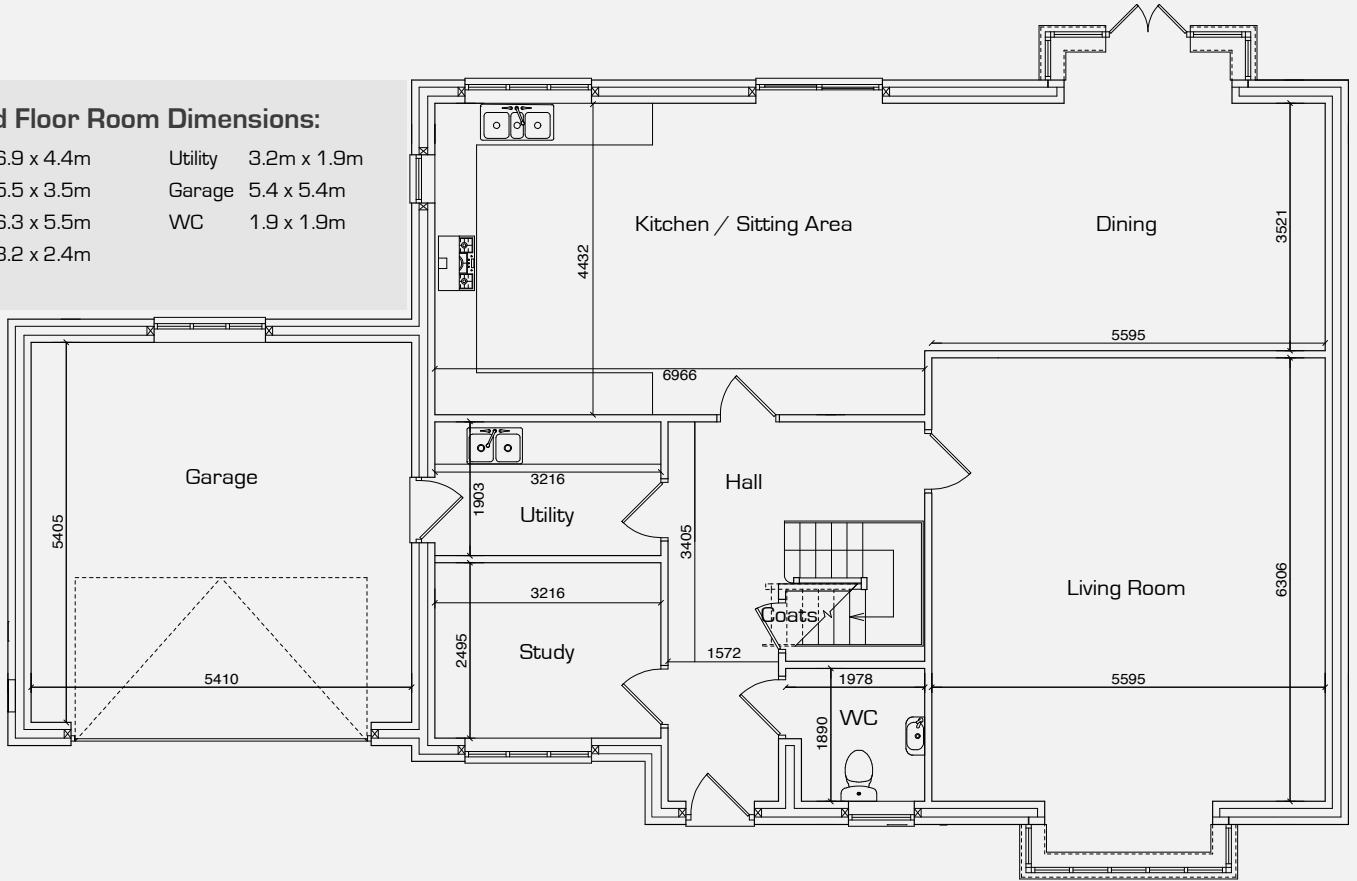
Please contact our sales partner Halls for details and pricing.

Plot One

Floor Plans

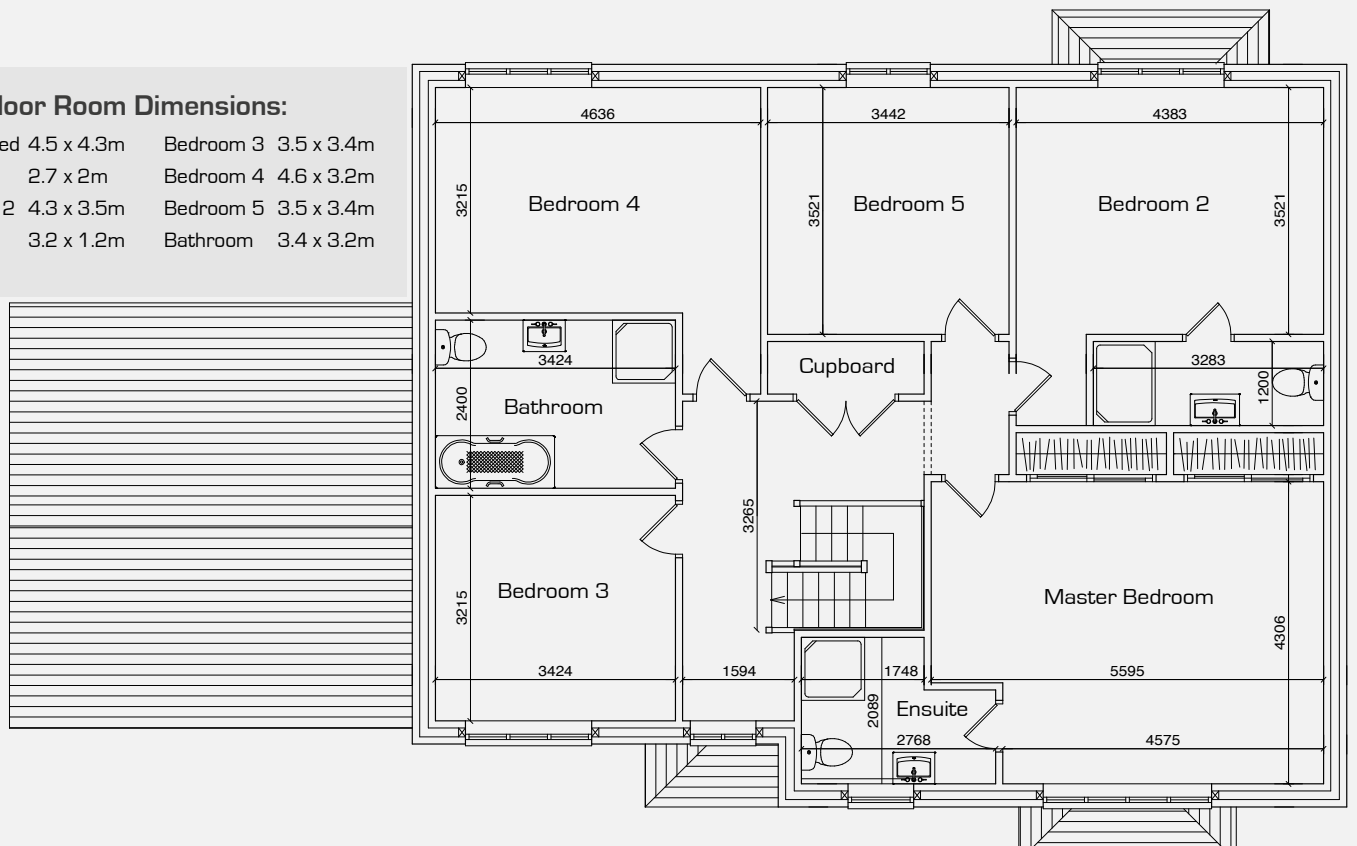
Ground Floor Room Dimensions:

Kitchen	6.9 x 4.4m	Utility	3.2m x 1.9m
Dining	5.5 x 3.5m	Garage	5.4 x 5.4m
Living	6.3 x 5.5m	WC	1.9 x 1.9m
Study	3.2 x 2.4m		



First Floor Room Dimensions:

Master Bed	4.5 x 4.3m	Bedroom 3	3.5 x 3.4m
Ensuite	2.7 x 2m	Bedroom 4	4.6 x 3.2m
Bedroom 2	4.3 x 3.5m	Bedroom 5	3.5 x 3.4m
Ensuite	3.2 x 1.2m	Bathroom	3.4 x 3.2m



All plans and visuals are for illustration only and may change prior to completion. Measurements are approximate and correct at time of printing.